

# KL5

## Data Sheet & Order Code

Order Code	
□	0 = 460VAC/60Hz/3PH
	1 = 575VAC/60Hz/3PH (optional)
	2 = 380VAC/50Hz/3PH (optional)
□	0 = enclosures—NEMA12 (control panel), NEMA1 (heater)
	1 = weatherized—NEMA4—both control panel and heater (optional)
□	0 = fork lift movable
	1 = portability package (optional)

Order Code Example: KL5

Order Code	
0	0 = 460VAC/60Hz/3PH
	1 = 575VAC/60Hz/3PH (optional)
	2 = 380VAC/50Hz/3PH (optional)
0	0 = enclosures—NEMA12 (control panel), NEMA1 (heater)
	1 = weatherized—NEMA4—both control panel and heater (optional)
1	0 = fork lift movable
	1 = portability package (optional)

Outline Drawing,  
Flow Schematic, and  
Wiring Diagram  
available upon request.

Skid Size / Weight	60" L (1524 mm) x 38" W (965 mm) x 77" H (1956 mm) 1250 lbs. (567 kg) (dry)
Inlet / Outlet Connections	Inlet = 1.5" (38.1 mm) — NPT Outlet = 1" (25.4 mm) — NPT
Strainer Mesh	30 mesh (595 micron)
Motor	.75 HP (.56 kw) / 1750 rpm / TEFC
Pump	5 gpm (19 lpm) Positive Displacement — Gear (relief set at 90 psig (6.3 kg/cm <sup>2</sup> ))
Heater	4 kw / watt density = 23 w/in. <sup>2</sup> (3.6 w/cm <sup>2</sup> ) — NEMA 1 Enclosure
Prefilter Element	K1100 (5 micron / quantity = 1) Rating: 99.9% — per ISO 16889 micro-fiberglass filter media, rust preventative end caps & support tubes, nitrile gaskets, collapse rating = 100 psid (7 kg/cm <sup>2</sup> differential)
Coalescer Element	K2100 (quantity = 1) — water removal (5 micron @ 99.9%)
Separator Element	K3100 (quantity = 1) — water removal (4 micron @ 99.9%)
Controls Interface	K-E-Z <sup>®</sup> Control Panel with ON/OFF Pushbuttons (NEMA 12 Enclosure)
Safety Shutdown Alarms	Low Flow Switch — system shutdown if flow rate is less than 2 gpm (7.6 lpm) Vacuum Switch — system shutdown if pump suction reaches 12" Hg (305 mm)
Filter Vessels	Carbon Steel ASME Code Vessels (150 psig @ 250°F / 10.5 kg/cm <sup>2</sup> @ 121°C) Utilizing heavy duty element standpipes and knife-edge element sealing surfaces
Operating Voltage / Amp Draw	460 VAC / 60 Hz / 3 PH / 12 amps
System Gauges & Indicators	Element Differential Pressures Gauges and Heater Temperature Controller Dirty Filter Alarm Lights (Filter # 1 and 2)
Automatic Water Drain	Float switch with solenoid valve with totalizing water meter
Performance	Particulate — ISO 18/16/13 (inlet ) and ISO 16/41/11 (outlet) Water Removal to 100 ppm or less

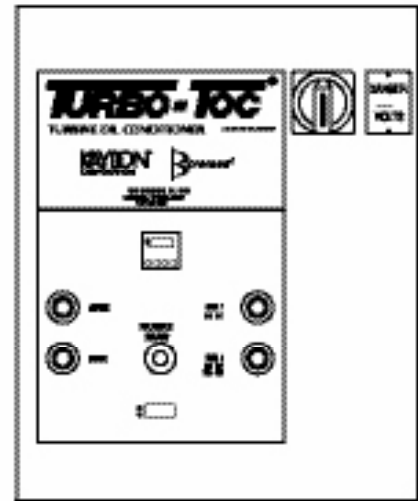
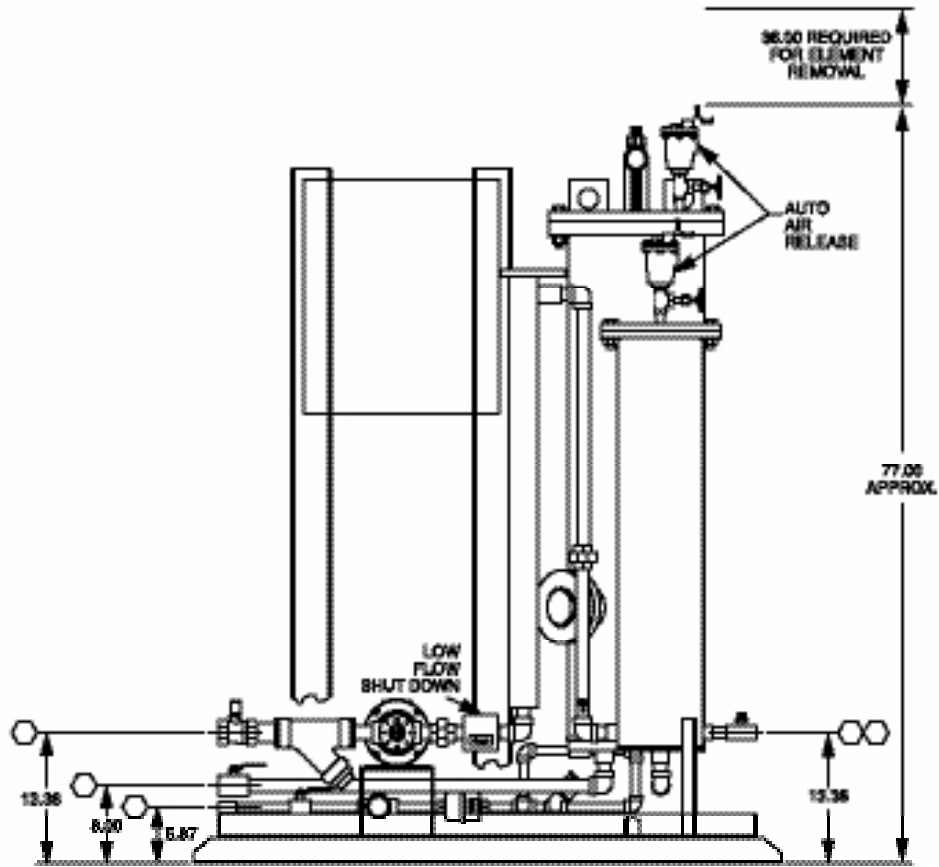
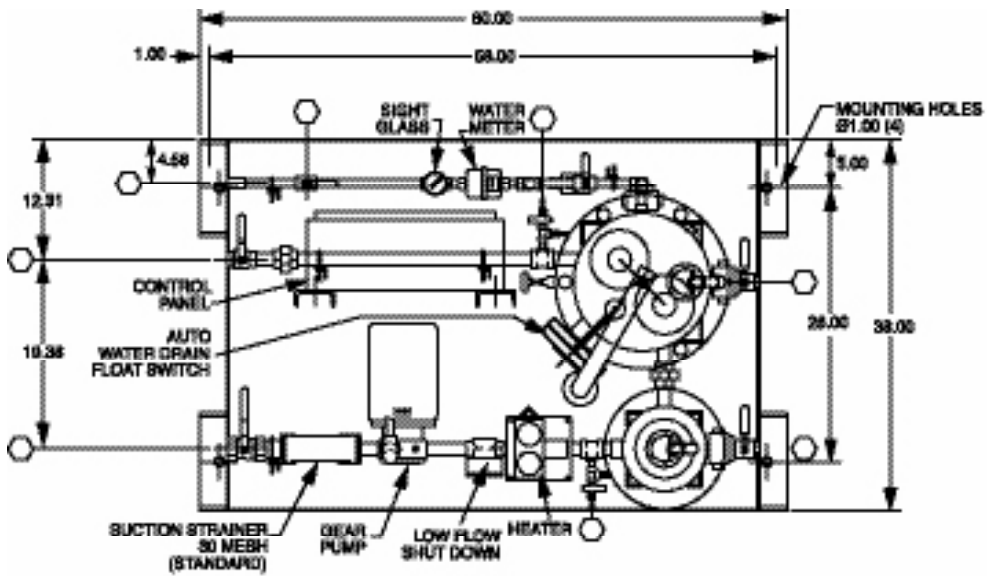
OPTIONS	
Voltage	575 VAC / 60 Hz / 3 PH or 380 VAC / 50 Hz / 3 PH
Weatherized	NEMA 12 Control Panel Enclosure and NEMA 1 Heater Enclosure both change to NEMA 4 Enclosures, and a Pressure Relief Valve set at 150 psig (10.5 kg/cm <sup>2</sup> ) is installed. This option is desirable if the system is installed in an outdoor area that is exposed to temperatures above freezing.
Explosion Proof	Can withstand pressures resulting from an internal explosion and contain the explosion so that the enclosure will not be ignited. (TEFC, NEMA 7, Class I, Division II, Groups C & D)
Portability Package	Includes casters and tow bar. If the system is planning to be used with two or more reservoirs, this option is helpful to move the system between both reservoirs.



Kaydon Custom Filtration Corporation

# KL5

CAD Drawing



CONTROL PANEL DOOR

ISO 9001:2000



Certificate No.: 002232



Kaydon Custom  
Filtration Corporation

1571 Lukken Industrial Drive West • LaGrange, Georgia USA 30240  
Phone: 1 (800) 241-2342 1 (706) 884-3041 • Fax: 1 (706) 883-6199  
Web: www.kaydonfiltration.com • Email: filtration@kaydon.com  
©2005, Kaydon Corporation