

KL30

Data Sheet & Order Code

Order Code



0 = 460VAC/60Hz/3PH

1 = 575VAC/60Hz/3PH (optional)

2 = 380VAC/50Hz/3PH (optional)



0 = enclosures—NEMA12 (control panel) NEMA1 (heater)

1 = weatherized—NEMA 4—both control panel and heater (optional)



0 = fork lift movable

1 = portability package (optional)

Order Code Example: KL30

Order Code



0 = 460VAC/60Hz/3PH

1 = 575VAC/60Hz/3PH (optional)

2 = 380VAC/50Hz/3PH (optional)



0 = enclosures—NEMA12 (control panel) NEMA 1 (heater)

1 = weatherized—NEMA 4—both control panel and heater (optional)



0 = fork lift movable

1 = portability package (optional)

Outline Drawing,
Flow Schematic, and
Wiring Diagram
available upon request.

OPTIONS

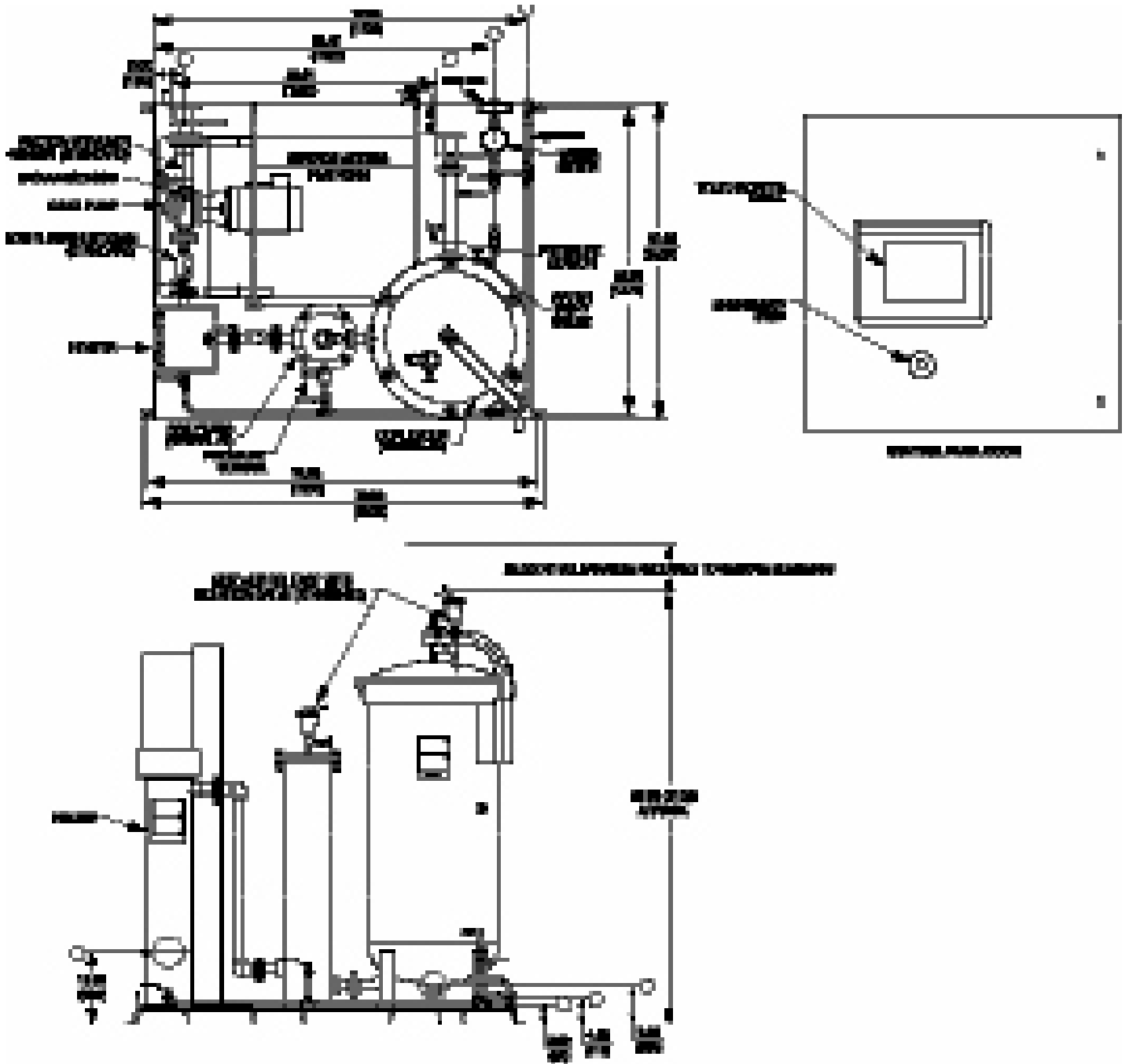
Skid Size / Weight	72" L (1829 mm) x 60" W (1524 mm) x 83" H (2108 mm) 3850 lbs. (1746 kg) (dry)
Inlet / Outlet Connections	2" (50.8 mm) — 150# RF Flange 1.5" (38.1 mm) — 150# RF Flange
Strainer Mesh	30 mesh (595 micron)
Motor	5 hp (3.73 kw) / 1750 rpm / TEFC
Pump	30 gpm (113 lpm) maximum flow rate Positive Displacement — Gear (relief set at 90 psig (6.3 kg/cm ²))
Heater	22.5 kw / watt density = 23 w/in. ² (3.6 w/cm ²) — NEMA 1 Enclosure
Prefilter Element	K1100 (5 micron / quantity = 1) Rating: 99.9% — per ISO 16889 micro-fiberglass filter media, rust preventative endcaps and centertube, nitrile gaskets, collapse rating = 100 psid (7 kg/cm ² differential)
Coalescer Element	K2100 (qty. = 5) — 1st stage water removal (5 micron @ 99.9%)
Separator Element	K3100 (qty. = 3) — 2nd stage water removal (4 micron @ 99.9%)
Controls Interface	K-Touch® Technology (NEMA 12 Control Panel)
Safety Shutdown Alarms	Low Flow Switch — system shutdown if flow rate is less than 6 gpm (23 lpm) Vacuum Switch — system shutdown if pump suction reaches 12" Hg (305 mm) Hi-Temp Switch — system shutdown if heater temperature = 180°F (82.2°C)
Filter Vessels	Carbon Steel ASME Code Vessels (150 psig @ 250°F / 10.5 kg/cm ² @ 121°C) Utilizing heavy duty element standpipes and knife-edge element sealing surfaces
Operating Voltage / Amp Draw	460 VAC / 60 Hz / 3 PH / 40 amps
Controls	Operation — Start & Stop Command Window, plus Emergency STOP button Flow Control — automatically changes flow rate with changes of oil temperature Flow Range = 10 — 30 gpm (37.8 — 113.5 lpm) At 100°F temperature and above — system operates @ maximum flow)
System Gauges & Indicators	Touch Window Technology Control Panel — indicates pump pressure, element differential pressures, and oil temperature in a graphical window display Water Removal Data Window — maintains water removal for day, week and year
Automatic Water Drain	Float switch with solenoid valve
Performance	Particulate — ISO 18/16/13 (inlet) and ISO 16/14/11 (outlet) Water Removal to 100 ppm or less
Operating Voltage	575 VAC / 60 Hz / 3 PH or 380 VAC / 50 Hz / 3 PH
Weatherized	NEMA 12 Control Panel Enclosure and NEMA 1 Heater Enclosure both change to NEMA 4 Enclosures and a Pressure Relief Valve set at 150 psig (10.5 kg/cm ²) is installed. This option is desirable if the system is installed in an outdoor area that is exposed to temperatures above freezing.
Portability Package	Includes casters and tow bar. If the system is planning to be used with two or more reservoirs, this option is helpful to move the system between both reservoirs.



Kaydon Custom Filtration Corporation

KL30

CAD Drawing



ISO 9001:2000



Certificate No.: 002232



Kaydon Custom
Filtration Corporation

1571 Lukken Industrial Drive West • LaGrange, Georgia USA 30240
 Phone: 1 (800) 241-2342 1 (706) 884-3041 • Fax: 1 (706) 883-6199
 Web: www.kaydonfiltration.com • Email: filtration@kaydon.com
 ©2005, Kaydon Corporation