

# KL10

## Data Sheet & Order Code

### Order Code

- 0** = 460 VAC / 60 Hz / 3 PH  
 **1** = 575 VAC / 60 Hz / 3 PH (optional)  
 **2** = 380 VAC / 50 Hz / 3 PH (optional)
- 0** = enclosures – NEMA 12 (control panel), NEMA 1 (heater)  
 **1** = weatherized – NEMA 4 – both control panel and heater (optional)
- 0** = fork lift movable  
 **1** = portability package (optional)

### Order Code Example: KL10

#### Order Code

- 2** **0** = 460 VAC / 60 Hz / 3 PH  
 **1** = 575 VAC / 60 Hz / 3 PH (optional)  
 **2** = 380 VAC / 50 Hz / 3 PH (optional)
- 0** = enclosures – NEMA 12 (control panel), NEMA 1 (heater)  
 **1** = weatherized – NEMA 4 – both control panel and heater (optional)
- 1** **0** = fork lift movable  
 **1** = portability package (optional)

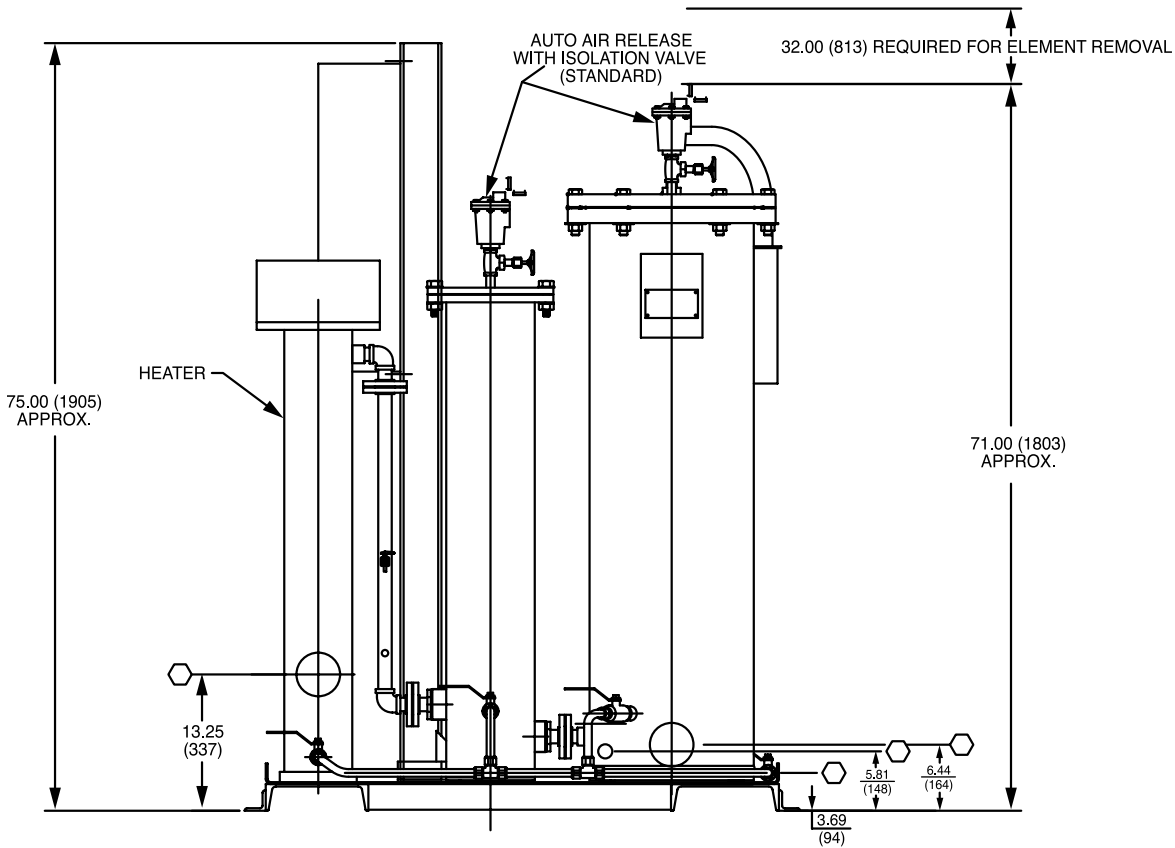
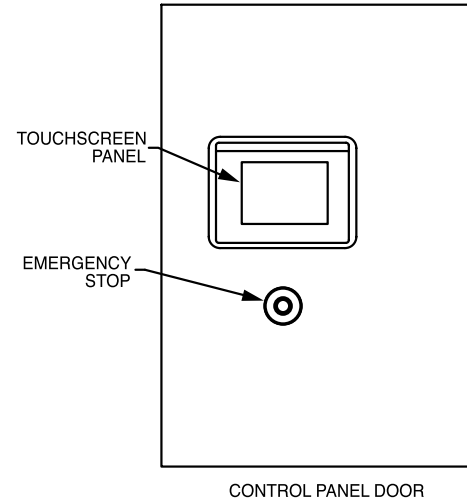
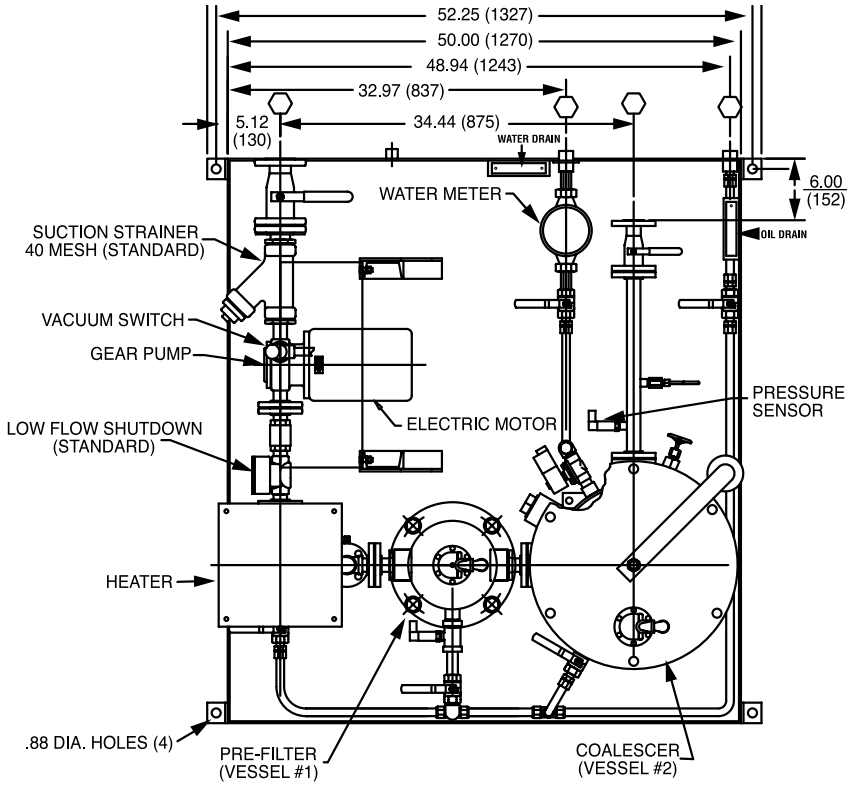
Outline Drawing,  
Flow Schematic, and  
Wiring Diagram  
available upon request.

Skid Size / Weight	51" L (1295 mm) x 44" W (1118 mm) x 75" H (1955 mm) 1575 pounds (714.4 kg) (dry)	
Inlet / Outlet Connections	Inlet = 1.5" (38.1 mm) – 150# ANSI Flange 1" (25.4 mm) – 150# ANSI Flange	
Strainer Mesh	30 mesh (595 micron)	
Motor	1.5 hp (1.12 kw) / 1750 rpm / TEFC	
Pump	10 gpm (37.9 lpm) Positive Displacement – Gear (relief set at 90 psig (6.3 kg/cm <sup>2</sup> ))	
Heater	7.5 kw / watt density = 23 w/in. <sup>2</sup> (3.6 w/cm <sup>2</sup> ) – NEMA 1 Enclosure	
Prefilter Element	K1100 (5 micron / quantity = 1) Rating: 99.9% – per ISO 16889 micro-fiberglass filter media, rust preventative end caps and support tubes, nitrile gaskets, collapse rating = 100 psid (7 kg/cm <sup>2</sup> differential)	
Coalescer Element	K2100 (quantity = 2) – 1st stage water removal (5 micron @ 99.7%)	
Separator Element	K3100 (quantity = 1) – 2nd stage water removal (4 micron at 99.7%)	
Controls Interface	K-Touch® Technology (NEMA 12 Control Panel Enclosure)	
Safety Shutdown Alarms	Low Flow Switch – system shutdown if flow rate is less than 3 gpm (11.4 lpm) Vacuum Switch – system shutdown if pump suction reaches 12" Hg (305 mm) Hi-Temp Switch – system shutdown if heater temperature = 180°F (82.2°C)	
Filter Vessels	Carbon Steel ASME Code Vessels (150 psig @ 250°F / 10.5 kg/cm <sup>2</sup> @ 121°C) Utilizing heavy duty element standpipes and knife-edge element sealing surfaces	
Operating Voltage / Amp Draw	460 VAC / 60 Hz / 3 PH / 30 amps	
Controls	Operation – Start & Stop Command Window, plus Emergency STOP button	
System Gauges & Indicators	Touch Window Technology Control Panel – indicates pump pressure, element differential pressures, and oil temperature in a graphical window display. Water Removal Data Window – maintains water removal for hour, day, week and year	
Automatic Water Drain	Float switch with solenoid valve	
Performance	Particulate – ISO 18/16/13 (inlet) and ISO 16/14/11 (outlet) Water Removal to 100 ppm or less	
<b>OPTIONS</b>	Operating Voltage	575 VAC / 60 Hz / 3 PH <b>or</b> 380 VAC / 50 Hz / 3 PH
	Weatherized	NEMA 12 Control Panel Enclosure and NEMA 1 Heater Enclosure both change to NEMA 4 Enclosures, and a Pressure Relief Valve set at 150 psig (10.5 kg/cm <sup>2</sup> ) is installed. This option is desirable if the system is installed in an outdoor area that is exposed to temperatures above freezing.
	Portability Package	Includes casters and tow bar. If the system is planning to be used with two or more reservoirs, this option is helpful to move the system between both reservoirs.



Kaydon Custom Filtration Corporation

# KL10 CAD Drawing



ISO 9001:2000



Certificate No.: 002232



**Kaydon Custom  
Filtration Corporation**

1571 Lukken Industrial Drive West • LaGrange, Georgia USA 30240  
Phone: 1 (800) 241-2342 • 1 (706) 884-3041 • Fax: (706) 883-6199  
Web: [www.kaydonfiltration.com](http://www.kaydonfiltration.com) • Email: [filtration@kaydon.com](mailto:filtration@kaydon.com)  
©2005, Kaydon Corporation